

HIV/AIDS in Santa Cruz County

**A report summarizing HIV/AIDS
local data and trends through 2003**



Prepared by the Health Services Agency, Public Health Division

Tracy Van Hoy, HIV/AIDS Surveillance Coordinator
Leslie Goodfriend, MPH, Health Services Manager
David McNutt, M.D., MPH, Health Officer
June 2004

Executive Summary of the 2003 HIV/AIDS Report

- The number of persons living with AIDS was at an all-time high going into the year 2003 at a total of 247, or approximately 43% of all persons ever diagnosed with AIDS. There were more persons who became AIDS-diagnosed (17) than who died during 2003 (5), continuing a trend of many years' standing.
- Men who have sex with men (MSM) continue to represent most persons diagnosed with AIDS in recent years, but exposure to HIV via heterosexual activity is a growing concern, now accounting for over 13% of cases in the past several years. Injection drug use continues to be the second-most reported manner of contracting HIV.
- Because persons with AIDS are living longer, probably due to the newer therapies, there are more and more persons who have AIDS in addition to other chronic diseases associated with older age such as diabetes, heart disease, and diseases of the liver, such as hepatitis C associated cirrhosis.
- With HIV, non-AIDS cases now reportable, this document provides an overview of all newly identified HIV cases as they are reported to the Health Services Agency. Among HIV, non-AIDS cases MSM continues to be the mode of transmission most often reported. During 2003 there were 9 new HIV positive cases, and 5 of those identified MSM behavior as their mode of transmission.
- The California State Office of AIDS has published a county-by-county estimate of the plausible numbers of persons with HIV infections. Using the State figures for calculation and comparison, the Health Services Agency estimates that there are between 571 and 672 persons with HIV in Santa Cruz County, of whom 100 or more are unaware of their serostatus. There may be 25 new infections per year occurring in Santa Cruz County.

Santa Cruz County New AIDS Cases by Year Diagnosed and Cases Alive at End of Year 1983 - December 31, 2003

The bar graph on the facing page depicts the number of persons whose primary residence was in Santa Cruz County and who, in each of the years from 1983 through 2003, were diagnosed with AIDS. The range is from one person diagnosed in 1983 to 73 persons diagnosed in 1992.

In 2003, 17 persons who claimed residence in Santa Cruz County were diagnosed with AIDS.

The line graph is a cumulative count of persons who, among those enumerated in the bar graph, were living on December 31 in each of the years from 1983 through 2003.

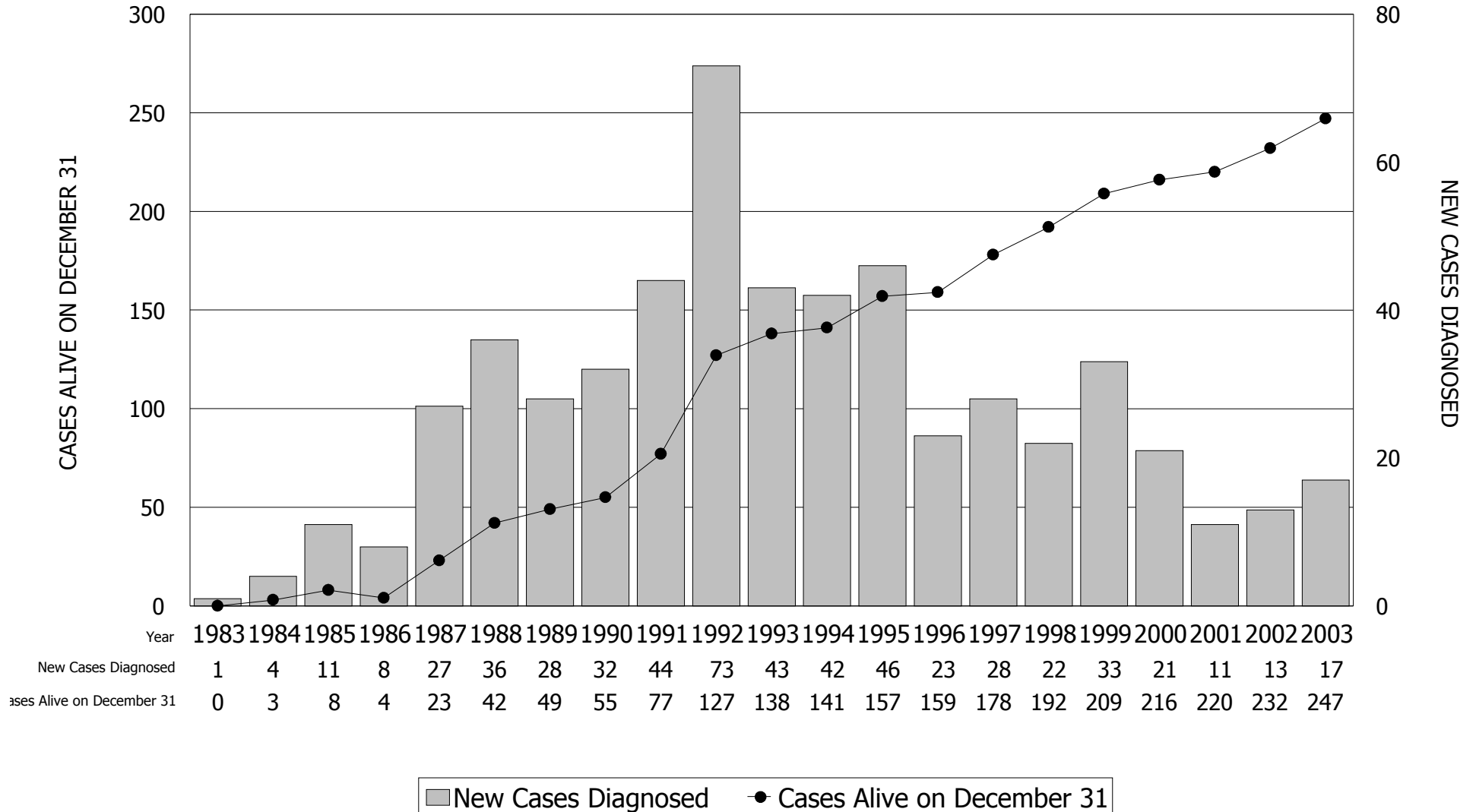
The line graph follows the state trend of ever-increasing annual numbers of persons who are living with AIDS. As of December 31, 2003, 247 persons diagnosed with AIDS sometime in the past were alive, per the county database.

The bar graph depicts 1992 as the year with the most ever reported new local AIDS cases counted. This matches the data in most California counties as well as the cumulative state count for California. In the years since 1992, annual new case counts have not followed a predictable trend. In some years cases dropped, as between 1995 and 1996, only to rise again, as between 1998 and 1999. This uneven year-to-year experience is also seen in some other California counties. The state overall has seen a slow, rather steady decline in new cases, often attributed to persons with HIV initiating therapy that delays the onset of an AIDS-defining event.

Since 569 persons (3 children and 566 adolescents/adults) had ever been counted in the Santa Cruz database as local residents with AIDS, the 247 survivors represent approximately 43% of persons ever diagnosed with AIDS.

The Health Services Agency estimates that there are between 571 and 672 local persons with HIV infection (this figure includes the 247 persons living with AIDS) in Santa Cruz County.

SANTA CRUZ COUNTY NEW AIDS CASES BY YEAR DIAGNOSED AND CASES ALIVE AT THE END OF YEAR 1983 - December 31, 2003



Adult/Adolescent New AIDS Cases by Year, Gender, Mode of Transmission, Race/Ethnicity, and Age, Santa Cruz County, 1983 - December 31, 2003

The facing chart refers to the annual tallies of AIDS cases for persons ages 13 and older in each of the years since 1983. The total number of persons ever diagnosed with AIDS in this chart is 566. The chart excludes 3 children who had AIDS diagnosed in the past, all of whom died. The children were infected perinatally. There was a boy and two girls.

In all years, the number of new cases of AIDS among men exceeds the number of new cases in women. In 1999, the cases among women accounted for a larger share of all cases than in any prior year, with females accounting for over 18% of new cases.

The most common mode of transmission is sexual contact between men. This is true statewide. In Santa Cruz County, the trend follows the state trend of male-to-male sexual transmission accounting for a smaller share of transmissions as the years go by, while still remaining the most commonly reported transmission route. In 1999, male-to-male sexual transmission accounted for less than half of transmissions in new cases for the first time since the AIDS case registry was instituted. Persons who cited injection drug use without male-to-male sexual activity is the transmission category that accounted for three of the 17 newly diagnosed cases in 2003. Infections associated with injection drug use are accounting for larger shares of cases in many jurisdictions in California. The other mode of transmission that has been increasing in California has been heterosexual exposure (with no documentation of injection drug use), and in 2003, three of the 17 local cases fit this category.

In Santa Cruz County, AIDS has become over time, a disease that involves a larger share of the non-white population. This is true statewide. Non-Hispanic whites, the largest racial group in Santa Cruz, accounted for the largest raw number of cases. In 2003, whites accounted for 15 of the 17 cases, (88%). Non-Hispanic whites account for nearly 75% of the general county population. Latinos account for approximately 27% of the general population, and accounted for about 12% of new AIDS cases in 2003. The African American population has had a disproportionate share of AIDS cases over the years. The total of 24 ever-reported African American cases represents over 4% of all cases; African Americans represent about 1% of the general county population.

AIDS is often not diagnosed until a person has been infected with HIV for as many as 10 years. Therefore, the age at time of AIDS diagnosis may be interpreted as a decade after the age at which infection occurred. In Santa Cruz, the AIDS diagnosis is most common among persons in their thirties and forties. However, there are in each year those in their twenties who are diagnosed with AIDS, which indicates that infection is occurring among teenagers.

Five persons who had ever received an AIDS diagnosis died in 2003.

**Adult/Adolescent New AIDS Cases by Year, Gender, Mode of Transmission,
Race/Ethnicity and Age, Santa Cruz County, 1983-December 31st, 2003**

| Gender | 1983 | 1984 | 1985 | 1986 | 1987 | 1988 | 1989 | 1990 | 1991 | 1992 | 1993 | 1994 | 1995 | 1996 | 1997 | 1998 | 1999 | 2000 | 2001 | 2002 | 2003 | TOTAL |
|-------------------------------|------|------|------|------|------|------|------|------|------|------|------|------|------|------|------|------|------|------|------|------|------|-------|
| Male | 1 | 4 | 11 | 8 | 26 | 35 | 27 | 29 | 40 | 66 | 39 | 39 | 44 | 22 | 23 | 19 | 27 | 19 | 11 | 15 | 14 | 519 |
| Female | 0 | 0 | 0 | 0 | 1 | 1 | 1 | 3 | 4 | 7 | 4 | 2 | 3 | 1 | 4 | 2 | 6 | 2 | 0 | 3 | 3 | 47 |
| TOTAL | 1 | 4 | 11 | 8 | 27 | 36 | 28 | 32 | 44 | 73 | 43 | 41 | 47 | 23 | 27 | 21 | 33 | 21 | 11 | 18 | 17 | 566 |
| Mode of Transmission | | | | | | | | | | | | | | | | | | | | | | |
| Men Who Have Sex W/Men (MSM) | 1 | 4 | 7 | 4 | 24 | 30 | 22 | 25 | 29 | 45 | 29 | 29 | 35 | 15 | 19 | 14 | 15 | 12 | 5 | 10 | 6 | 380 |
| Injection Drug Users (IDU) | 0 | 0 | 0 | 0 | 1 | 3 | 2 | 4 | 5 | 13 | 4 | 4 | 6 | 3 | 4 | 2 | 9 | 4 | 2 | 4 | 3 | 73 |
| MSM/IDU | 0 | 0 | 3 | 3 | 1 | 2 | 2 | 2 | 5 | 7 | 6 | 5 | 2 | 2 | 0 | 0 | 0 | 2 | 3 | 2 | 3 | 50 |
| Heterosexual Exposure | 0 | 0 | 0 | 0 | 1 | 1 | 0 | 1 | 3 | 6 | 3 | 2 | 1 | 3 | 2 | 4 | 5 | 3 | 0 | 2 | 3 | 40 |
| Transfusion Recipient | 0 | 0 | 0 | 1 | 0 | 0 | 1 | 0 | 2 | 0 | 0 | 0 | 0 | 0 | 0 | 0 | 0 | 0 | 0 | 0 | 0 | 4 |
| Coagulation Disorder | 0 | 0 | 0 | 0 | 0 | 0 | 0 | 0 | 0 | 1 | 1 | 1 | 0 | 0 | 1 | 0 | 0 | 0 | 0 | 0 | 0 | 4 |
| Risk Not Reported/Other | 0 | 0 | 1 | 0 | 0 | 0 | 1 | 0 | 0 | 1 | 0 | 0 | 3 | 0 | 1 | 1 | 4 | 0 | 1 | 0 | 2 | 15 |
| TOTAL | 1 | 4 | 11 | 8 | 27 | 36 | 28 | 32 | 44 | 73 | 43 | 41 | 47 | 23 | 27 | 21 | 33 | 21 | 11 | 18 | 17 | 566 |
| Race/Ethnicity | | | | | | | | | | | | | | | | | | | | | | |
| White | 1 | 3 | 9 | 8 | 21 | 31 | 19 | 25 | 35 | 63 | 35 | 34 | 34 | 15 | 22 | 14 | 18 | 12 | 8 | 12 | 15 | 434 |
| Latina/o | 0 | 1 | 1 | 0 | 5 | 3 | 7 | 6 | 3 | 5 | 4 | 6 | 9 | 6 | 3 | 5 | 10 | 6 | 3 | 5 | 2 | 90 |
| African American | 0 | 0 | 1 | 0 | 1 | 1 | 1 | 1 | 3 | 5 | 2 | 0 | 1 | 1 | 0 | 2 | 3 | 2 | 0 | 0 | 0 | 24 |
| Asian Pacific Islander | 0 | 0 | 0 | 0 | 0 | 0 | 1 | 0 | 1 | 0 | 0 | 1 | 3 | 0 | 0 | 0 | 1 | 0 | 0 | 0 | 0 | 7 |
| American Indian/Alaska Native | 0 | 0 | 0 | 0 | 0 | 0 | 0 | 0 | 2 | 0 | 2 | 0 | 0 | 1 | 2 | 0 | 1 | 0 | 0 | 1 | 0 | 9 |
| Other/Unknown | 0 | 0 | 0 | 0 | 0 | 1 | 0 | 0 | 0 | 0 | 0 | 0 | 0 | 0 | 0 | 0 | 0 | 1 | 0 | 0 | 0 | 2 |
| TOTAL | 1 | 4 | 11 | 8 | 27 | 36 | 28 | 32 | 44 | 73 | 43 | 41 | 47 | 23 | 27 | 21 | 33 | 21 | 11 | 18 | 17 | 566 |
| Age Category | | | | | | | | | | | | | | | | | | | | | | |
| 13-19 | 0 | 0 | 0 | 0 | 0 | 0 | 0 | 0 | 0 | 0 | 0 | 1 | 0 | 0 | 0 | 0 | 0 | 0 | 0 | 0 | 0 | 1 |
| 20-29 | 0 | 2 | 1 | 2 | 6 | 8 | 4 | 3 | 1 | 16 | 8 | 4 | 9 | 5 | 6 | 4 | 4 | 2 | 1 | 3 | 2 | 91 |
| 30-39 | 0 | 2 | 6 | 2 | 8 | 24 | 12 | 17 | 25 | 33 | 18 | 24 | 19 | 11 | 8 | 9 | 13 | 14 | 5 | 5 | 7 | 262 |
| 40-49 | 0 | 0 | 4 | 3 | 11 | 4 | 7 | 9 | 15 | 14 | 15 | 8 | 12 | 6 | 8 | 5 | 10 | 3 | 2 | 7 | 5 | 148 |
| Over 49 | 1 | 0 | 0 | 1 | 2 | 0 | 5 | 3 | 3 | 10 | 2 | 4 | 7 | 1 | 5 | 3 | 6 | 2 | 3 | 3 | 3 | 64 |
| TOTAL | 1 | 4 | 11 | 8 | 27 | 36 | 28 | 32 | 44 | 73 | 43 | 41 | 47 | 23 | 27 | 21 | 33 | 21 | 11 | 18 | 17 | 566 |
| Number of Deaths | 1 | 1 | 6 | 12 | 8 | 17 | 22 | 26 | 22 | 23 | 32 | 39 | 29 | 20 | 8 | 7 | 15 | 9 | 9 | 8 | 5 | 319 |

Deaths Occurring During the Calendar Year in
Santa Cruz County, 1983-December 31st, 2003

Adult/Adolescent New AIDS Cases by Year and Zip Code at Time of Diagnosis, Santa Cruz County, 1983 - December 31, 2003

The table on the next page is a year-by-year review of where (by zip code) persons with AIDS resided within Santa Cruz County in the year in which they were diagnosed.

Persons with AIDS have lived in every part of the county, but the distribution has never been homogenous. The largest concentration of persons with AIDS has been in and around the City of Santa Cruz (including Live Oak), comprising about 244 (48%) persons with AIDS diagnosis since 1983, and 83 (56%) persons diagnosed since 1997.

The mid-county area of Capitola, Soquel, and Aptos has accounted for about 19% of ever diagnosed adolescents/adults.

The southern area of the county defined as Freedom, Watsonville and Aromas, has about 14% of ever diagnosed adolescents/adults.

The San Lorenzo Valley communities of Scotts Valley, Felton, Ben Lomond, Brookdale and the Summit area account for about 16% of ever-diagnosed adult/adolescent cases.

Eight (0.1%) persons diagnosed between the period 1983 and 2003 had unknown zip codes, all of which were diagnosed in the last 6 years.

Adult/Adolescent New AIDS Cases by Year and Zip Code at
Time of Diagnosis, Santa Cruz County, 1983-December 31, 2003

| | 1983 | 1984 | 1985 | 1986 | 1987 | 1988 | 1989 | 1990 | 1991 | 1992 | 1993 | 1994 | 1995 | 1996 | 1997 | 1998 | 1999 | 2000 | 2001 | 2002 | 2003 | Total | |
|--------------|----------|----------|-----------|----------|-----------|-----------|-----------|-----------|-----------|-----------|-----------|-----------|-----------|-----------|-----------|-----------|-----------|-----------|-----------|-----------|-----------|------------|-----|
| 95001 | 0 | 0 | 0 | 0 | 1 | 1 | 0 | 1 | 0 | 0 | 0 | 0 | 0 | 0 | 0 | 0 | 0 | 0 | 0 | 0 | 0 | 0 | 3 |
| 95003 | 0 | 0 | 0 | 3 | 5 | 2 | 0 | 4 | 6 | 6 | 4 | 7 | 3 | 2 | 2 | 2 | 1 | 4 | 0 | 0 | 0 | 0 | 51 |
| 95004 | 0 | 0 | 0 | 0 | 0 | 0 | 0 | 0 | 1 | 0 | 0 | 0 | 0 | 0 | 0 | 0 | 0 | 0 | 0 | 0 | 0 | 0 | 1 |
| 95005 | 0 | 0 | 0 | 1 | 0 | 3 | 1 | 0 | 3 | 3 | 3 | 2 | 1 | 0 | 0 | 0 | 0 | 0 | 0 | 0 | 0 | 0 | 17 |
| 95006 | 0 | 1 | 0 | 0 | 2 | 1 | 0 | 1 | 6 | 5 | 4 | 5 | 2 | 1 | 0 | 0 | 0 | 0 | 0 | 1 | 0 | 0 | 29 |
| 95007 | 0 | 0 | 0 | 0 | 0 | 1 | 0 | 1 | 0 | 0 | 1 | 0 | 0 | 0 | 0 | 0 | 1 | 0 | 0 | 0 | 0 | 1 | 5 |
| 95010 | 0 | 0 | 2 | 0 | 0 | 2 | 2 | 1 | 2 | 11 | 1 | 0 | 0 | 1 | 2 | 0 | 0 | 1 | 0 | 1 | 0 | 0 | 26 |
| 95018 | 0 | 0 | 2 | 0 | 1 | 3 | 0 | 1 | 2 | 2 | 1 | 1 | 1 | 0 | 3 | 1 | 2 | 1 | 0 | 3 | 2 | 0 | 26 |
| 95019 | 0 | 1 | 0 | 0 | 0 | 0 | 0 | 0 | 1 | 1 | 2 | 0 | 1 | 0 | 0 | 0 | 0 | 0 | 1 | 1 | 0 | 0 | 8 |
| 95030 | 0 | 0 | 0 | 0 | 0 | 1 | 0 | 1 | 1 | 0 | 0 | 0 | 0 | 0 | 0 | 0 | 0 | 0 | 0 | 0 | 0 | 0 | 3 |
| 95060 | 0 | 2 | 2 | 1 | 6 | 9 | 9 | 10 | 9 | 18 | 13 | 6 | 17 | 8 | 12 | 9 | 18 | 7 | 4 | 7 | 6 | 0 | 173 |
| 95061 | 0 | 0 | 0 | 0 | 2 | 0 | 0 | 0 | 0 | 1 | 0 | 2 | 0 | 1 | 1 | 0 | 0 | 0 | 0 | 0 | 0 | 0 | 7 |
| 95062 | 1 | 0 | 1 | 1 | 4 | 6 | 4 | 6 | 7 | 11 | 9 | 5 | 10 | 3 | 4 | 2 | 3 | 3 | 1 | 0 | 2 | 0 | 83 |
| 95064 | 0 | 0 | 0 | 0 | 0 | 0 | 1 | 0 | 0 | 0 | 0 | 0 | 0 | 0 | 0 | 0 | 1 | 0 | 0 | 0 | 0 | 0 | 2 |
| 95065 | 0 | 0 | 0 | 2 | 1 | 0 | 0 | 0 | 0 | 2 | 0 | 1 | 0 | 0 | 0 | 0 | 0 | 0 | 0 | 1 | 2 | 0 | 9 |
| 95066 | 0 | 0 | 1 | 0 | 0 | 2 | 1 | 0 | 0 | 2 | 2 | 2 | 2 | 0 | 0 | 1 | 0 | 0 | 0 | 0 | 0 | 0 | 13 |
| 95073 | 0 | 0 | 0 | 0 | 2 | 3 | 2 | 2 | 2 | 3 | 1 | 5 | 1 | 3 | 1 | 0 | 2 | 0 | 1 | 1 | 1 | 0 | 30 |
| 95076 | 0 | 0 | 3 | 0 | 3 | 2 | 8 | 4 | 4 | 8 | 2 | 5 | 9 | 4 | 2 | 5 | 3 | 5 | 4 | 1 | 0 | 0 | 72 |
| Unknown | 0 | 0 | 0 | 0 | 0 | 0 | 0 | 0 | 0 | 0 | 0 | 0 | 0 | 0 | 0 | 1 | 2 | 0 | 0 | 2 | 3 | 0 | 8 |
| TOTAL | 1 | 4 | 11 | 8 | 27 | 36 | 28 | 32 | 44 | 73 | 43 | 41 | 47 | 23 | 27 | 21 | 33 | 21 | 11 | 18 | 17 | 566 | |

| City of Santa Cruz | | | | | Mid-County | | | | South County | | | | San Lorenzo Valley | | | | |
|----------------------|-----------------------------------|--|--|--|----------------------|--------------|--|--|----------------------|-------|--|--|----------------------|------------------|-------|-------|--|
| Santa Cruz | 95060, 95061, 95062, 95064, 95065 | | | | Capitola | 95010 | | | Freedom | 95019 | | | Scotts Valley | | 95066 | | |
| | | | | | Soquel | 95073 | | | Watsonville | 95076 | | | Felton | | 95018 | | |
| | | | | | Aptos | 95003, 95001 | | | Aromas | 95004 | | | Ben Lomond | | 95005 | | |
| | | | | | | | | | | | | | | Boulder Creek | | 95006 | |
| | | | | | | | | | | | | | | Brookdale | | 95007 | |
| | | | | | | | | | | | | | | Los Gatos/Summit | | 95030 | |
| 48.4% of total cases | | | | | 19.4% of total cases | | | | 14.3% of total cases | | | | 16.4% of total cases | | | | |

**The 100 Most Recently Reported Adult AIDS Cases by
Ethnicity/Race, Mode of Transmission, and Gender Within Age
Groups,
Santa Cruz County, January 1, 1999 - December 31, 2003**

The table on the facing page provides a closer look at the 100 most recently AIDS-diagnosed persons. These 100 persons are divided into four categories based on age at time of diagnosis. Within the age range, there is a further breakdown into race/ethnicity, mode of transmission and gender. This group could be representative of those who are most recently enrolled in care and treatment programs at the various local agencies serving clients.

The table shows that the 14 women who have been diagnosed with AIDS since mid-1999 are more likely to be younger than the men. Three of the 14 women were in their twenties; 9 of the 86 men were in their twenties.

The 14 women had the following modes of transmission: 4 are counted as injection drug users, and 10 are counted as persons who were infected through heterosexual contact.

Across all age categories men who have sex with men account for most infections.

Injection drug use accounted for the second most common mode of transmission, with 13 of the 22 IDUs documented as white, three as African American, five Latino, and one Native American.

Note: The following graph has abbreviations that are being used for the first time within this report.

- * Het = Heterosexual Contact
- * Adult Hemo = Adult Hemophiliac
- * Trans Recip = Transfusion or Transplant Recipient
- * NIR = No Identifiable Risk

**The 100 Most Recently Reported Adult AIDS Cases by Ethnicity/Race, Mode of Transmission and Gender
Within Age Groups, Santa Cruz County, January 1, 1999-December 31, 2003**

| Age 20-29 | MSM | | IDU | | MSM/IDU | | Het | | Adult Hemo. | | Transf.Recip. | | NIR | | TOTAL |
|-------------------------------|-----------|----------|-----------|----------|-----------|----------|-----------|----------|-------------|----------|---------------|----------|----------|----------|------------|
| | M | F | M | F | M | F | M | F | M | F | M | F | M | F | |
| White | 2 | 0 | 0 | 0 | 2 | 0 | 0 | 2 | 0 | 0 | 0 | 0 | 0 | 0 | 6 |
| African American | 0 | 0 | 0 | 0 | 0 | 0 | 0 | 0 | 0 | 0 | 0 | 0 | 0 | 0 | 0 |
| Latina/o | 2 | 0 | 1 | 1 | 0 | 0 | 1 | 0 | 0 | 0 | 0 | 0 | 1 | 0 | 6 |
| Asian/Pacific Islander | 0 | 0 | 0 | 0 | 0 | 0 | 0 | 0 | 0 | 0 | 0 | 0 | 0 | 0 | 0 |
| American Indian/Alaska Native | 0 | 0 | 0 | 0 | 0 | 0 | 0 | 0 | 0 | 0 | 0 | 0 | 0 | 0 | 0 |
| Other Unknown | 0 | 0 | 0 | 0 | 0 | 0 | 0 | 0 | 0 | 0 | 0 | 0 | 0 | 0 | 0 |
| TOTAL | 4 | 0 | 1 | 1 | 2 | 0 | 1 | 2 | 0 | 0 | 0 | 0 | 1 | 0 | 12 |
| Age 30-39 | MSM | | IDU | | MSM/IDU | | Het | | Adult Hemo. | | Transf.Recip. | | NIR | | TOTAL |
| | M | F | M | F | M | F | M | F | M | F | M | F | M | F | |
| White | 13 | 0 | 5 | 2 | 5 | 0 | 0 | 3 | 0 | 0 | 0 | 0 | 0 | 0 | 28 |
| African American | 0 | 0 | 0 | 0 | 0 | 0 | 2 | 0 | 0 | 0 | 0 | 0 | 0 | 0 | 2 |
| Latina/o | 8 | 0 | 2 | 0 | 0 | 0 | 0 | 2 | 0 | 0 | 0 | 0 | 2 | 0 | 14 |
| Asian/Pacific Islander | 0 | 0 | 0 | 0 | 0 | 0 | 0 | 0 | 0 | 0 | 0 | 0 | 0 | 0 | 0 |
| American Indian/Alaska Native | 0 | 0 | 0 | 0 | 0 | 0 | 0 | 0 | 0 | 0 | 0 | 0 | 0 | 0 | 0 |
| Other Unknown | 0 | 0 | 0 | 0 | 0 | 0 | 0 | 0 | 0 | 0 | 0 | 0 | 0 | 0 | 0 |
| TOTAL | 21 | 0 | 7 | 2 | 5 | 0 | 2 | 5 | 0 | 0 | 0 | 0 | 2 | 0 | 44 |
| Age 40-49 | MSM | | IDU | | MSM/IDU | | Het | | Adult Hemo. | | Transf.Recip. | | NIR | | TOTAL |
| | M | F | M | F | M | F | M | F | M | F | M | F | M | F | |
| White | 9 | 0 | 3 | 1 | 3 | 0 | 0 | 2 | 0 | 0 | 0 | 0 | 1 | 0 | 19 |
| African American | 0 | 0 | 2 | 0 | 0 | 0 | 0 | 0 | 0 | 0 | 0 | 0 | 0 | 0 | 2 |
| Latina/o | 2 | 0 | 0 | 0 | 0 | 0 | 0 | 0 | 0 | 0 | 0 | 0 | 2 | 0 | 4 |
| Asian/Pacific Islander | 1 | 0 | 0 | 0 | 0 | 0 | 0 | 0 | 0 | 0 | 0 | 0 | 0 | 0 | 1 |
| American Indian/Alaska Native | 0 | 0 | 1 | 0 | 0 | 0 | 0 | 0 | 0 | 0 | 0 | 0 | 0 | 0 | 1 |
| Other Unknown | 0 | 0 | 0 | 0 | 0 | 0 | 0 | 0 | 0 | 0 | 0 | 0 | 0 | 0 | 0 |
| TOTAL | 12 | 0 | 6 | 1 | 3 | 0 | 0 | 2 | 0 | 0 | 0 | 0 | 3 | 0 | 27 |
| Age=>49 | MSM | | IDU | | MSM/IDU | | Het | | Adult Hemo. | | Transf.Recip. | | NIR | | TOTAL |
| | M | F | M | F | M | F | M | F | M | F | M | F | M | F | |
| White | 10 | 0 | 2 | 0 | 0 | 0 | 0 | 0 | 0 | 0 | 0 | 0 | 1 | 0 | 13 |
| African American | 0 | 0 | 1 | 0 | 0 | 0 | 0 | 0 | 0 | 0 | 0 | 0 | 0 | 0 | 1 |
| Latina/o | 1 | 0 | 1 | 0 | 0 | 0 | 0 | 0 | 0 | 0 | 0 | 0 | 0 | 0 | 2 |
| Asian/Pacific Islander | 0 | 0 | 0 | 0 | 0 | 0 | 0 | 0 | 0 | 0 | 0 | 0 | 0 | 0 | 0 |
| American Indian/Alaska Native | 0 | 0 | 0 | 0 | 0 | 0 | 0 | 0 | 0 | 0 | 0 | 0 | 0 | 0 | 0 |
| Other Unknown | 0 | 0 | 0 | 0 | 0 | 0 | 0 | 1 | 0 | 0 | 0 | 0 | 0 | 0 | 1 |
| TOTAL | 11 | 0 | 4 | 0 | 0 | 0 | 0 | 1 | 0 | 0 | 0 | 0 | 1 | 0 | 17 |
| GRAND TOTAL | 48 | | 22 | | 10 | | 13 | | 0 | | 0 | | 7 | | 100 |

Adult AIDS Cases by Ethnicity/Race, Mode of Transmission and Gender Within Age Groups, Santa Cruz County, 1983 - December 31, 2003

The facing tables provide another display of the 566 Adolescent/Adult AIDS cases ever diagnosed and counted in the local database. The table on top shows the race/ethnicity versus the mode of transmission, which is further divided between males and females.

This table shows that of all female injection drug users, 16 are white and 1 is Latina, whereas heterosexual women include Whites, Latinas, and a Native American. Women account for 28 of the 40 cases (70%) attributed to heterosexual contact.

In the second table, the display of age categories indicates that those who were older at the time of diagnosis with AIDS were more likely to be men who have sex with men. Seventy one percent of those 40 years of age or older are men who have sex with men, while approximately 55% of those under 30 years of age are men who have sex with men.

Note: The following graph uses the abbreviations below.

- * Het = Heterosexual Contact
- * Adult Hemo = Adult Hemophiliac
- * Trans Recip = Transfusion or Transplant Recipient
- * NIR = No Identifiable Risk

Adult AIDS Cases by Ethnicity/Race, Mode of Transmission and Gender Within Age Groups, Santa Cruz County, 1983-December 31, 2003

| Ethnicity/Race | MSM | | IDU | | MSM/IDU | | Het | | Adult Hemo. | | Transf.Recip. | | NIR | | TOTAL |
|-------------------------------|------------|----------|-----------|-----------|-----------|----------|-----------|-----------|-------------|----------|---------------|----------|-----------|----------|------------|
| | M | F | M | F | M | F | M | F | M | F | M | F | M | F | |
| White | 299 | 0 | 39 | 16 | 39 | 0 | 4 | 23 | 3 | 1 | 3 | 0 | 7 | 0 | 434 |
| African American | 11 | 0 | 7 | 0 | 3 | 0 | 3 | 0 | 0 | 0 | 0 | 0 | 0 | 0 | 24 |
| Latina/o | 63 | 0 | 8 | 1 | 3 | 0 | 4 | 3 | 0 | 0 | 0 | 1 | 7 | 0 | 90 |
| Asian/Pacific Islander | 5 | 0 | 0 | 0 | 1 | 0 | 0 | 0 | 0 | 0 | 0 | 0 | 1 | 0 | 7 |
| American Indian/Alaska Native | 2 | 0 | 2 | 0 | 3 | 0 | 1 | 1 | 0 | 0 | 0 | 0 | 0 | 0 | 9 |
| Other Unknown | 0 | 0 | 0 | 0 | 1 | 0 | 0 | 1 | 0 | 0 | 0 | 0 | 0 | 0 | 2 |
| TOTAL | 380 | 0 | 56 | 17 | 50 | 0 | 12 | 28 | 3 | 1 | 4 | 1 | 13 | 0 | 566 |

| Age Category | MSM | | IDU | | MSM/IDU | | Het | | Adult Hemo. | | Transf.Recip. | | NIR | | TOTAL |
|--------------|------------|----------|-----------|-----------|-----------|----------|-----------|-----------|-------------|----------|---------------|----------|-----------|----------|------------|
| | M | F | M | F | M | F | M | F | M | F | M | F | M | F | |
| 13-19 | 0 | 0 | 0 | 0 | 0 | 0 | 0 | 0 | 1 | 0 | 0 | 0 | 0 | 0 | 1 |
| 20-29 | 51 | 0 | 6 | 6 | 10 | 0 | 4 | 10 | 1 | 0 | 0 | 0 | 3 | 0 | 91 |
| 30-39 | 178 | 0 | 27 | 9 | 31 | 0 | 3 | 8 | 1 | 0 | 0 | 0 | 5 | 0 | 262 |
| 40-49 | 109 | 0 | 14 | 2 | 9 | 0 | 2 | 6 | 0 | 1 | 1 | 0 | 4 | 0 | 147 |
| Over 49 | 42 | 0 | 9 | 0 | 0 | 0 | 3 | 4 | 0 | 0 | 2 | 1 | 3 | 0 | 65 |
| TOTAL | 380 | 0 | 56 | 17 | 50 | 0 | 12 | 28 | 3 | 1 | 3 | 1 | 15 | 0 | 566 |

Adult/Adolescent HIV Non-Name Code Reporting Cases by Gender, Age, Ethnicity/Race, and Mode of Transmission, Santa Cruz County, July 1, 2002 - December 31, 2003

The Santa Cruz County Health Services Agency, in compliance with the State Department of Health Services, began data collection of positive HIV tests as of July 1, 2002, and continues to update and maintain data through the HIV/AIDS Reporting Surveillance System. Surveillance reporting prior to July 1, 2002, has consisted of AIDS cases only, determined by a low CD 4 or T-cell count and/or the presence of an HIV positive status in conjunction with one of the 26 AIDS related opportunistic (immune compromising) infections.

The data on the facing page reflects the HIV positive statistics from July 1, 2002 through December 31, 2003. The majority of the cases (125) are individuals who tested positive for HIV prior to July 1, 2002. Approximately 9 of the 134 individuals were newly diagnosed cases during 2003.

The HIV+/Non-AIDS cases show a similar distribution of transmission as AIDS cases with the exception of IDU and Heterosexual Contact. Among cumulative AIDS cases, 13% of cases are attributed to IDU transmission. In the HIV+/Non-AIDS cases, 7% are attributed to IDU risk. Among AIDS cases, 7% of cases are due to Heterosexual Contact, while among HIV+ it is higher, 13%.

**Adult/Adolescent HIV Non-AIDS Cases by
Year, Gender, Mode of Transmission, Race/Ethnicity, and Age
Santa Cruz County
July 1, 2002 - December 31, 2003**

| Gender | 2002 | 2003 | Total |
|-------------------------------|------|------|-------|
| Male | 105 | 9 | 114 |
| Female | 20 | 0 | 20 |
| TOTAL | 125 | 9 | 134 |
| Mode of Transmission | 2002 | 2003 | Total |
| Men Who Have Sex W/Men (MSM) | 83 | 5 | 88 |
| Injection Drug Users (IDU) | 9 | 1 | 10 |
| MSM/IDU | 7 | 0 | 7 |
| Heterosexual Exposure | 16 | 1 | 17 |
| Transfusion Recipient | 1 | 1 | 2 |
| Coagulation Disorder | 1 | 0 | 1 |
| Risk Not Reported/Other | 8 | 1 | 9 |
| TOTAL | 125 | 9 | 134 |
| Race/Ethnicity | 2002 | 2003 | Total |
| White | 93 | 7 | 100 |
| Latina/o | 23 | 0 | 23 |
| African American | 7 | 0 | 7 |
| Asian Pacific Islander | 2 | 0 | 2 |
| American Indian/Alaska Native | 0 | 1 | 1 |
| Other/Unknown | 0 | 1 | 1 |
| TOTAL | 125 | 9 | 134 |
| Age Category | 2002 | 2003 | Total |
| 13-19 | 3 | 0 | 3 |
| 20-29 | 14 | 2 | 16 |
| 30-39 | 34 | 3 | 37 |
| 40-49 | 44 | 4 | 48 |
| Over 49 | 30 | 0 | 30 |
| TOTAL | 125 | 9 | 134 |

HIV Positive Cases by Ethnicity/Race and Gender/Age Groups Santa Cruz County January 1, 2003 - December 31, 2003

The table on the following page provides an overview of HIV positive, non-AIDS cases in Santa Cruz County during the 12-month period, January 1, 2003 to December 31, 2003. The table is divided into sections based on ethnicity/transmission and age/transmission. There were 9 HIV, non-AIDS cases identified in Santa Cruz County during 2003. Five of those cases were among MSM. Of the remaining 4, one reported Heterosexual contact, one IDU, one recipient of a blood transfusion and one as no identifiable risk (NIR).

Breaking down these cases by ethnicity/race, 7 of the cases reported were White, with one case identifying as American Indian/Alaska Native and the other as Unknown. There were no new HIV cases among Latinos. There were no female HIV+ cases identified and reported to HSA during 2003.

Within age categories the majority of newly identified HIV+ cases were in the 40-49 year age group. Four new cases were identified in this group. Three new cases were identified in the 30-39 year age group and there were 2 new cases in the 20-29 year age group.

Given the delay in identifying cases and reporting them to the Health Services Agency, it is possible that more new cases identified in 2003 will be reported to HSA in 2004. These cases will appear in the 2004 annual report as new cases for 2003.

**HIV Positive Cases by Ethnicity/Race and Gender/Age Groups
Santa Cruz County January 1, 2003 - December 31, 2003**

| Ethnicity/Race | MSM | | IDU | | MSM/IDU | | Het | | Adult Hemo. | | Transf.Recip. | | NIR | | TOTAL |
|-------------------------------|----------|----------|----------|----------|----------|----------|----------|----------|-------------|----------|---------------|----------|----------|----------|----------|
| | M | F | M | F | M | F | M | F | M | F | M | F | M | F | |
| White | 5 | 0 | 1 | 0 | 0 | 0 | 0 | 0 | 0 | 0 | 0 | 0 | 1 | 0 | 7 |
| African American | 0 | 0 | 0 | 0 | 0 | 0 | 0 | 0 | 0 | 0 | 0 | 0 | 0 | 0 | 0 |
| Latina/o | 0 | 0 | 0 | 0 | 0 | 0 | 0 | 0 | 0 | 0 | 0 | 0 | 0 | 0 | 0 |
| Asian/Pacific Islander | 0 | 0 | 0 | 0 | 0 | 0 | 0 | 0 | 0 | 0 | 0 | 0 | 0 | 0 | 0 |
| American Indian/Alaska Native | 0 | 0 | 0 | 0 | 0 | 0 | 1 | 0 | 0 | 0 | 0 | 0 | 0 | 0 | 1 |
| Other Unknown | 0 | 0 | 0 | 0 | 0 | 0 | 0 | 0 | 0 | 0 | 1 | 0 | 0 | 0 | 1 |
| TOTAL | 5 | 0 | 1 | 0 | 0 | 0 | 1 | 0 | 0 | 0 | 1 | 0 | 1 | 0 | 9 |

| Age Category | MSM | | IDU | | MSM/IDU | | Het | | Adult Hemo. | | Transf.Recip. | | NIR | | TOTAL |
|--------------|----------|----------|----------|----------|----------|----------|----------|----------|-------------|----------|---------------|----------|----------|----------|----------|
| | M | F | M | F | M | F | M | F | M | F | M | F | M | F | |
| 13-19 | 0 | 0 | 0 | 0 | 0 | 0 | 0 | 0 | 0 | 0 | 0 | 0 | 0 | 0 | 0 |
| 20-29 | 1 | 0 | 0 | 0 | 0 | 0 | 0 | 0 | 0 | 0 | 0 | 0 | 1 | 0 | 2 |
| 30-39 | 1 | 0 | 1 | 0 | 0 | 0 | 1 | 0 | 0 | 0 | 0 | 0 | 0 | 0 | 3 |
| 40-49 | 3 | 0 | 0 | 0 | 0 | 0 | 0 | 0 | 0 | 0 | 1 | 0 | 0 | 0 | 4 |
| Over 49 | 0 | 0 | 0 | 0 | 0 | 0 | 0 | 0 | 0 | 0 | 0 | 0 | 0 | 0 | 0 |
| TOTAL | 5 | 0 | 1 | 0 | 0 | 0 | 1 | 0 | 0 | 0 | 1 | 0 | 1 | 0 | 9 |

Anonymous HIV Testing for the Santa Cruz County Health Services Agency HIV Testing Program, 1992 - December 31, 2003

Each year the Health Services Agency offers anonymous testing for HIV infection to persons who provide demographic information, but who are not identifiable by name. The number of tests varies. In 2003, there were 1,025 such tests. It is possible for a person to be tested more than once; therefore the 1,025 on the following page represents tests rather than individuals.

Anonymous test data provide an opportunity to identify persons who may not have AIDS but who do have HIV infection. Thus, the 100 individuals who tested positive from 1992 onward may have already been counted as an AIDS case in the preceding pages of the report (i.e. through duplication).

The positive HIV testing data parallels the AIDS data in that MSM comprise the most infections (53%) followed by IDU (13%) and MSM/IDU (11%).

Males account for 91 of the 100 positive tests. Whites account for 65% of positive tests and Latinos account for 22% of positive tests.

HIV TESTING SANTA CRUZ COUNTY HEALTH SERVICES AGENCY HIV TESTING PROGRAM

ANONYMOUS HIV TESTING, 1992-2003

| YEAR | 1992 | 1993 | 1994 | 1995 | 1996 | 1997 | 1998 | 1999 | 2000 | 2001 | 2002 | 2003 | Total |
|------------------|-------|-------|-------|-------|-------|-------|-------|-------|-------|-------|-------|------|--------|
| Number Tested | 2,537 | 1,804 | 3,485 | 2,109 | 2,359 | 2,227 | 2,001 | 1,498 | 1,299 | 1,291 | 1,201 | 1025 | 22,836 |
| Number Positive | 11 | 12 | 23 | 6 | 4 | 7 | 9 | 8 | 8 | 5 | 6 | 1 | 100 |
| Percent Positive | 0.43% | 0.67% | 0.66% | 0.28% | 0.17% | 0.31% | 0.45% | 0.53% | 0.62% | 0.39% | .50% | 01% | .44% |

| YEAR | 1992 | | 1993 | | 1994 | | 1995 | | 1996 | | 1997 | | 1998 | | 1999 | | 2000 | | 2001 | | 2002 | | 2003 | | TOTAL | % of Pos. | |
|-----------------------------------|-----------|----------|-----------|----------|-----------|----------|----------|----------|----------|----------|----------|----------|----------|----------|----------|----------|----------|----------|----------|----------|-----------|----------|----------|--------------|-------|-----------|-----|
| Risk | M | F | M | F | M | F | M | F | M | F | M | F | M | F | M | F | M | F | T | M | F | T | M | F | M | F | T |
| MSM | 6 | | 7 | | 11 | | 5 | | 2 | | 5 | | 3 | | 4 | | 4 | | 3 | | 3 | | | | 53 | 53% | |
| IDU | 1 | | 3 | | 3 | | | | 1 | | 1 | | 1 | | 1 | | 1 | | | | | | | | 12 | 1 | 13% |
| MSM/IDU | 2 | | | | | | 1 | | 1 | | 1 | | 3 | | | | 1 | | 1 | | 2 | | | | 9 | 2 | 11% |
| Partner HIV+/At Risk | | 1 | 1 | | 1 | | | | | | | | 1 | | | | | | | | | 1 | | | 3 | 4 | 7% |
| Transfusion | | | | | 2 | | | | | | | | | | | | | | | | | | 1 | | 3 | | 3% |
| Multiple Sex Partners | | | | | 1 | | | | | | | | 1 | | | | | | | | | | | | 2 | | 2% |
| Partner Has Multiple Sex Partners | 1 | | | | 2 | | | | | | | | | | | | | | | | | | | | 3 | | 3% |
| Heterosexual Contact | | | | | | | | | | | | | | 1 | | | 1 | 1 | | | | | | | 2 | 1 | 3% |
| Risk Info. Missing | | | | | 2 | | | | | | | | | | 1 | | | | | | | 2 | | | 4 | 1 | 5% |
| TOTAL | 10 | 1 | 11 | 1 | 23 | 6 | 4 | 7 | 8 | 1 | 6 | 2 | 6 | 2 | 4 | 1 | 5 | 1 | 1 | 0 | 91 | 7 | 2 | 100%* | | | |

| YEAR | 1992 | | 1993 | | 1994 | | 1995 | | 1996 | | 1997 | | 1998 | | 1999 | | 2000 | | 2001 | | 2002 | | 2003 | | TOTAL | % of Pos. | | | |
|------------------------|-----------|----------|-----------|----------|-----------|----------|----------|----------|----------|----------|----------|----------|----------|----------|----------|----------|----------|----------|----------|----------|-----------|----------|----------|--------------|-------|-----------|----|-----|-----|
| RACE | M | F | M | F | M | F | M | F | M | F | M | F | M | F | M | F | M | F | T | M | F | T | M | F | M | F | T | | |
| White | 10 | 1 | 9 | | 14 | | 3 | | 4 | | 3 | | 5 | | 4 | | 2 | | 4 | | 1 | 1 | 2 | | 1 | 59 | 5 | 1 | 65% |
| Latina/o | | | 2 | | 4 | | 2 | | | | 3 | | 2 | | 1 | | 2 | | 1 | | 2 | | 3 | | | 21 | 1 | 22% | |
| African American | | | | | 2 | | | | | | | | 1 | 1 | 1 | | | | | | | | | | | 4 | 1 | 5% | |
| Asian Pacific Islander | | | | 1 | | | | | | | 1 | | | | | | | | | | | | | 1 | | 3 | 1 | 4% | |
| Native American | | | | | 1 | | 1 | | | | | | | | | | 1 | | | | | | | | 3 | | 3% | | |
| Other | | | | | 2 | | | | | | | | | | | | | | | | | | | | | 2 | | 2% | |
| TOTAL | 10 | 1 | 11 | 1 | 23 | 6 | 4 | 7 | 8 | 1 | 6 | 2 | 6 | 2 | 4 | 1 | 5 | 1 | 1 | 0 | 91 | 7 | 2 | 100%* | | | | | |

* Total may not equal 100% due to rounding and/or multiple risk factors.

** M=Male, F=Female, T=Transgender

Estimate of Local HIV Morbidity

There are, by estimate of the Centers for Disease Control and Prevention, approximately 40,000 new HIV infections per year in the US. Given that Santa Cruz County has approximately 0.08% of the national population, it can be estimated that 32 (40,000x0.0008) new infections occur annually in Santa Cruz County. Santa Cruz County tends to have a slightly lower rate of AIDS diagnoses than the national rate, so this methodology may result in an overestimate and the actual number may be closer to 25 new infections annually.

HIV became reportable by a non-name code to the California Department of Health Services as of July 2002. As of December 31, 2003, 134 HIV non -AIDS cases in Santa Cruz County have been reported to the California Department of Health Services.

Various methods have been developed to estimate the number of seropositives locally. Seropositives include not only those who have HIV/AIDS and know it, but also persons who are infected and do not know their status. The total number of persons with HIV in Santa Cruz County, including those who do not know their serostatus, is the sum of (a) persons living with AIDS, who number 247, including pediatric cases, and (b) those with HIV but not AIDS.

The Health Services Agency estimates that the total number of seropositives (HIV/AIDS) is between 571 and 672.